



BORDER PATROL

a documentary exploration
of the US/MX border
using Google Maps

A FILM BY GAËLLE CINTRÉ

© 2009 Google

BORDER PATROL

a film by **Gaëlle Cintré**
produced by **Gaëlle Cintré**

title **Border Patrol**
genre **documentary**
language **none**
subtitles **none**
total running time **8 minutes**
shooting format **HD video**
screening format **ProRes 422**
image **16/9 color**
sound **mute**
country of production **USA**
year of completion **2010**

contact **Gaëlle Cintré, producer**
gaelle.cintre@gmail.com



logline **A documentary exploration of the US/MX border using Google Maps.**

synopsis **The Google Car, whose purpose is to systematically take pictures of road landscapes, can sometimes find itself in disconcerting situations. For instance, in Mexico, it follows the 'Wall of Shame' the USA are building at the border. In this specific context, the device and system Google sets up are very similar to the ones used by the American Migra: the Border Patrol cars are also topped by cameras. The Google Car, with its military origins, is simply unable to take pictures in an ideal and neutral documentary way. The aesthetics of its images is one of surveillance, intrusion and suspicion, that often reveals a latent violence.**

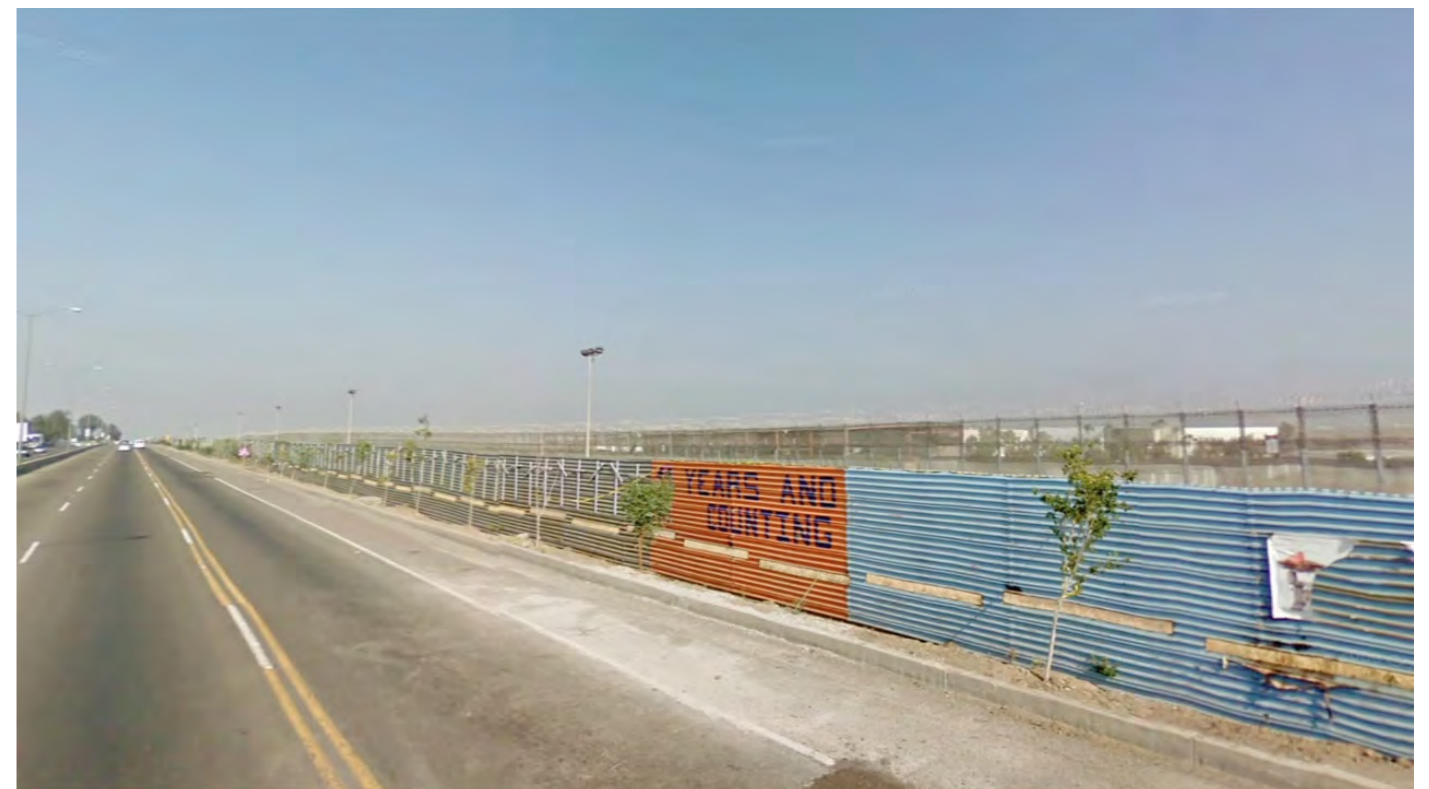
SCREENINGS

- 2013 **À nous de voir Festival**
invited by Bidhan Jacobs, Oullins [FR]
- 2011 **Black Box**
Veduta, 11th Lyon Biennale [FR]
Flare #17 Screening
Montpellier [FR]
- 2010 **pointligneplan Screening**
programmed by Pascal Beausse, La Fémis, Paris [FR]
Christmas Exhibition
Le Magasin, Grenoble [FR]
Doc en courts Festival
Lyon [FR]
Septembre de la photographie Biennale
Lyon [FR]
Extra 10 Festival
Annecy [FR]

ABOUT THE FILMMAKER

biography **Gaëlle Cintré** is a French artist and filmmaker. She was awarded her Master's degree for a dissertation on the effect digital technologies on cinema narratives, while her PhD from the European School of Visual Arts focused on the role of Hollywood blockbuster narratives in relation to California's 'seismic climate.' She has lectured on cinema and filmmaking at the National Institute of Art History in Paris, the National School of Fine Arts of Paris and the European School of Visual Arts. Her work has been shown across Europe, including at the Lyon Biennale, David Lynch's Silencio in Paris, the 8 rue Saint-Bon Gallery in Paris, Middlemarch Gallery in Brussels, the Kunstverein Sparkasse in Leipzig, Germany, and the Center of Photography in Geneva. Her latest documentary, **ZONE BLANCHE** has screened at many international festivals, including at the International Environmental Film Festival in Paris, Mojito Kino in Berlin, DOC NYC in Manhattan, the Chicago Underground Film Festival, and the Trento Film Festival in Italy. **ZONE BLANCHE** won the **Pézieux Prize** in France and the Jury's **Artistic Vision Award** at the Big Sky Documentary Film Festival. Gaëlle currently splits her time between France and the US. She's developing several documentary and film projects at the moment.

filmography **A FEEL OF THE DESERT**
super 8 film | 4/3 | color | silent | 8 minutes | 2015 | USA
ZONE BLANCHE [White Zone]
super 16 film | 16/9 | color | sound | 22 minutes | 2014 | France
ALORS, ON VA VOIR QUOI ? [So, what are we watching?]
HD video | 16/9 | color | sound | 9 minutes | 2012 | France
MALADRESSES ET EMBARRAS [Faux-Pas and Embarrasement]
HD video | 16/9 | color | sound | 19 minutes | 2011 | France
LE VEILLEUR [The Night Watchman]
HD video | 16/9 | color | sound | 8 minutes | 2011 | France
LES CRAMPES [The Cramps]
SD video | 4/3 | color | sound | 7 minutes | 2011 | France
BORDER PATROL
HD video | 16/9 | color | silent | 8 minutes | 2010 | USA
PICK-UP
HD video | 16/9 | color | silent | 20 minutes | 2010 | USA



press kit **BORDER PATROL**

contact **Gaëlle Cintré, producer**
gaelle.cintre@gmail.com

© **2010-2017 Gaëlle Cintré**
All rights reserved