

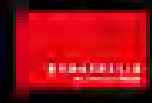
Konspiration –
welche Konspiration?

13.09.14 bis
04.01.15

Kunsthalle
der Sparkasse

Konspirationen gelten als geheim,
gehaltene Vorgänge mit (zunächst) verdeckt
– so zumindest
Wir sollen und können nichts Genaues wissen,
Wie Ungesehenes er
erläutern?
Dadurch vermuten wir oft Verschwörung, wo es k
So bedingen die Formen des Spekul
chwörer spekulieren. Die potentiellen
Konspirationen auf abstrakte
ationen unterschiedlicher Or
denken.
mit k

Kunsthalle
der Sparkasse
Leipzig



Konspiration — Welche Konspiration? [Conspiracy — Which Conspiracy?]
curators: Joachim Blank, Fabian Bechtle, Philippe Durand & Sébastien Leseigneur
group show, Kunsthalle der Sparkasse, Leipzig [GERMANY]

POST-MINING LANDSCAPES

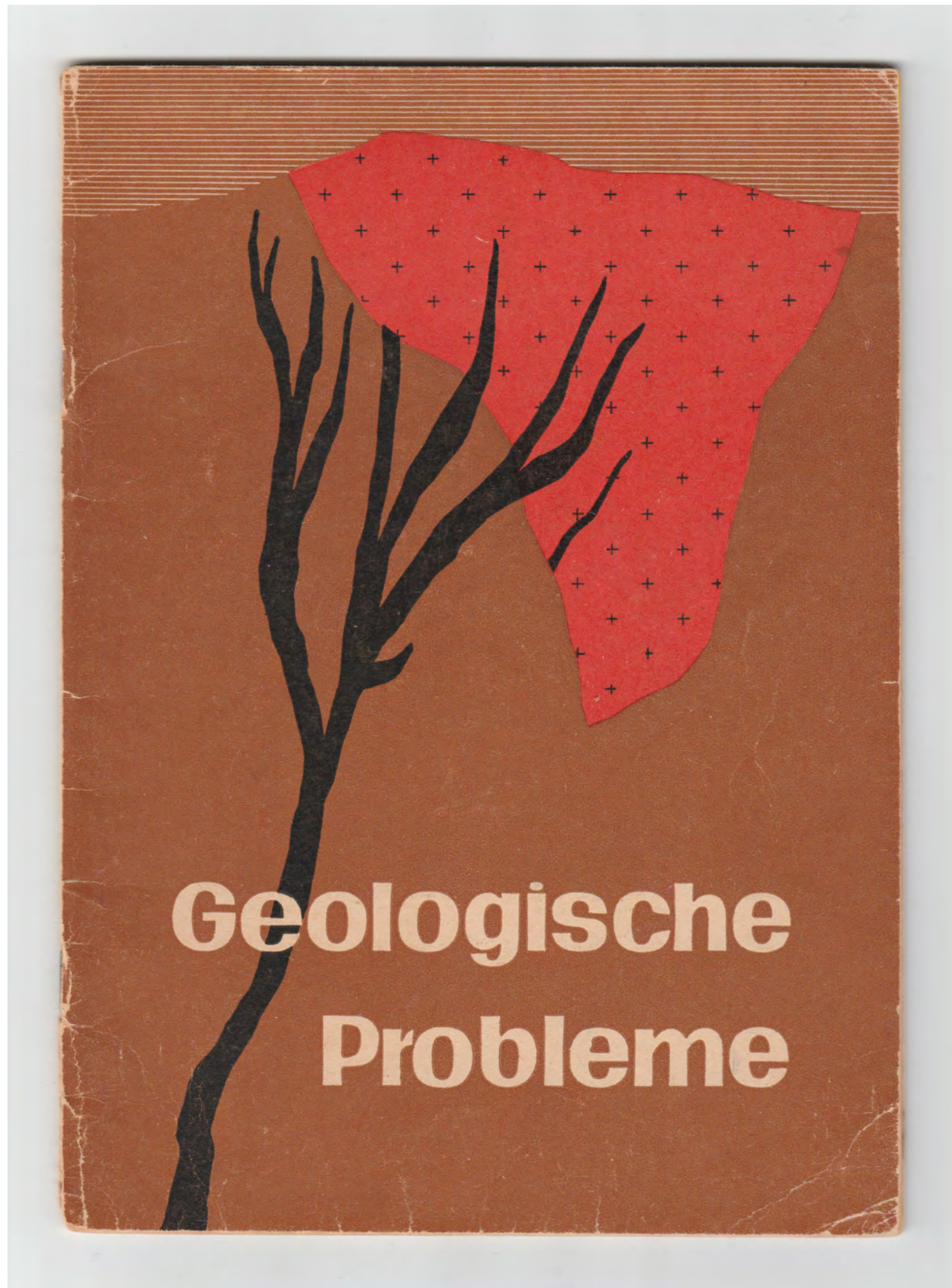


logline **A document and photographs installation.**

synopsis **This project focuses on the landscapes surrounding the city of Leipzig, Germany. This former mining region has been undergoing rapid change since the late 90s. The open-pit coal mining activities had left desolates strips of land that are little by little being transformed into parks and lakes. The mining landscape the GDR left behind, symbol of hard labor and a vision of socialism, has progressively and almost inconspicuously despite the scale of the endeavor turned into a postcard praising leisure society and consumerist capitalism. Those spaces are now the grounds of new activities, all indirectly bearing the marks of this terrotiory's history. This is how, in those lakes, scuba-diving can become an archaeological activity and unveils the strata of this repressed past. And it is certainly not a coincidence that geocaching — the burying and discovering of waterproof boxed containing trinkets using GPS— is a popular activity in the Lake District. So many hobbies that can be seen as a way to reclaim this territory, with new ways to explore and chart it off the beaten track.**



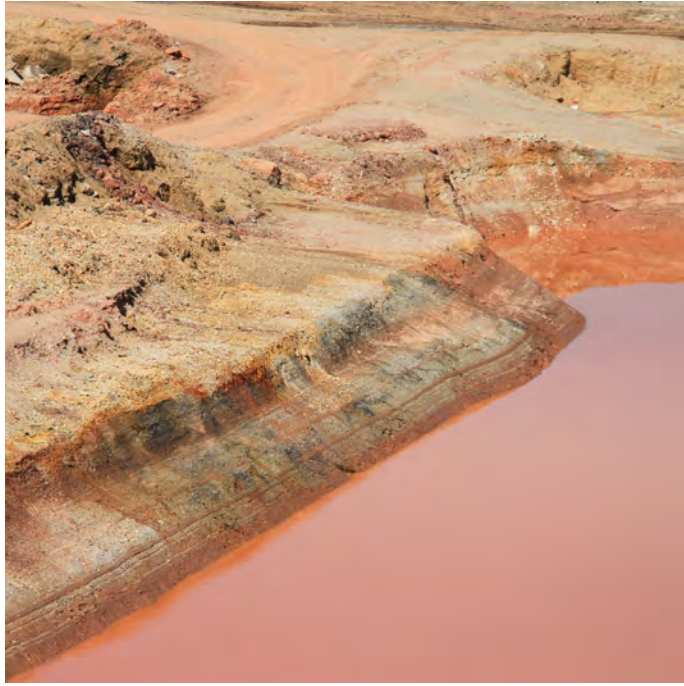
Coal Open Mine
carbon print | 2014



Geologische Probleme
framed document | 2014



Post-Mining Landscapes
series of 12 Lambda prints | 2014



Post-Mining Landscapes
series of 12 Lambda prints | 2014

Post-Mining Landscapes
series of 12 Lambda prints | 2014

ABOUT THE ARTIST

biography

Gaëlle Cintré is a French artist and filmmaker. She was awarded her Master's degree for a dissertation on the effect digital technologies on cinema narratives, while her PhD from the European School of Visual Arts focused on the role of Hollywood blockbuster narratives in relation to California's 'seismic climate.' She has lectured on cinema and filmmaking at the National Institute of Art History in Paris, the National School of Fine Arts of Paris and the European School of Visual Arts. Her work has been shown across Europe, including at the Lyon Biennale, David Lynch's Silencio in Paris, the 8 rue Saint-Bon Gallery in Paris, Middlemarch Gallery in Brussels, the Kunstverein Sparkasse in Leipzig, Germany, and the Center of Photography in Geneva. Her latest documentary, **ZONE BLANCHE** has screened at many international festivals, including at the International Environmental Film Festival in Paris, Mojito Kino in Berlin, DOC NYC in Manhattan, the Chicago Underground Film Festival, and the Trento Film Festival in Italy. ZONE BLANCHE won the **Pézieux Prize** in France and the Jury's **Artistic Vision Award** at the Big Sky Documentary Film Festival. Gaëlle currently splits her time between France and the US. She's developing several documentary and film projects at the moment.



Gaëlle Cintré (photography: Zachary M. Parris)

EXHIBITIONS (selection)

- 2015

Geopoetics of a Catastrophe
solo show, curator: Érik Bullot, Galerie La Box, Bourges [FR]
A Retro-Proerspective
curator: Laetitia Chauvin, Galerie Middlemarch, Bruxelles [BELGIUM]
- 2014

Conspiracy — Which Conspiracy?
curators: Joachim Blank, Fabian Bechtle, Philippe Durand & Sébastien Leseigneur, Kunsthalle der Sparkasse, Leipzig [ALLEMAGNE]
Toujours +
curators: Muriel Leray & Elsa Werth, Galerie Florence Loewy, Paris [FR]
Plus Une Pièce
curators: Muriel Leray & Elsa Werth, Box de stockage, Rue Vieille du Temple, Paris [FR]
Glissements de terrain : cartographie, pensée, paysage
curator: Joan Ayrton, Galerie La Box, Bourges [FR]
- 2013

Fundbüro
curators: Catherine Beaugrand & George Prfuender, Lux scène nationale, Valence [FR]
La Ligne d’ombre
curators: Mo Gourmelon & Éric Deneuveille, Espace Croisé, Roubaix [FR]
Cathy, Jean-Paul, Peg Entwistle and the Others
curators: Stéphanie Cottin & Clément Dirié, Galerie 8 rue Saint-Bon, Paris [FR]
Film Papier
curator: Érik Bullot, Galerie La Box, Bourges [FR]
Stalely Yes !
curators: Stéphanie Cottin & Collectif 1.0.3, ESBA, Angers [FR]
Fundbüro
curators: Catherine Beaugrand & George Prfuender, Réfectoire des Nonnes, ENSBA, Lyon [Fr]
- 2012

Furnished Studio
curator: Stéphanie Cottin, Galerie Jérôme Poggi, Paris [FR]
Mulhouse 012 Biennale
Mulhouse [FR]
Les Enfants de Sabbat XIII
curator: Frédéric Bouglé , Centre d’art du Creux de l’Enfer, Thiers [FR]
DatAData invite DATADAtA
curators: Catherine Braugrand & Madeleine Aktipi, Gaîté Lyrique, Paris [FR]
- 2011

Silent Lecture
6B, Saint-Denis [FR]
Face Crush
French cultural center of Jogjakarta [INDONESIA]
- 2010

Nowhere is a Place
curator: Pascal Beausse, Centre Photographique d’Île de France, Pontault-Combault [FR]
Christmas Exhibition
curator: Centre d’art du Magasin, Ancien Musée de peinture, Grenoble [FR]
Septembre de la Photographie Biennale
parcours associé, Lyon [FR]
37°46’45”N 122°25’9”W & 45°45’35”N 4°50’32”E — By Air Mail
SpaceKraft Pompadour, Lyon [FR]
Geeky Flow — Pixel Nostalgia
curator: Katya Bonnenfant, SpaceKraft Pompadour, Lyon [FR]
- 2009

Promises
curator: Katya Bonnenfant, SpaceKraft Pompadour, Lyon [FR]
Back to the Present
Transpalette, Bourges [FR]
À fond la forme !
curator: Camille Le Houezec, White Corners, Bourges [FR]
- 2008

Currents
curator: Hervé Trioreau, University of Arts, Taipei [TAIWAN]

press kit **POST-MINING LANDSCAPES**

contact **Gaëlle Cintré, artist**
gaelle.cintre@gmail.com

© **2014-2017 Gaëlle Cintré**
All rights reserved